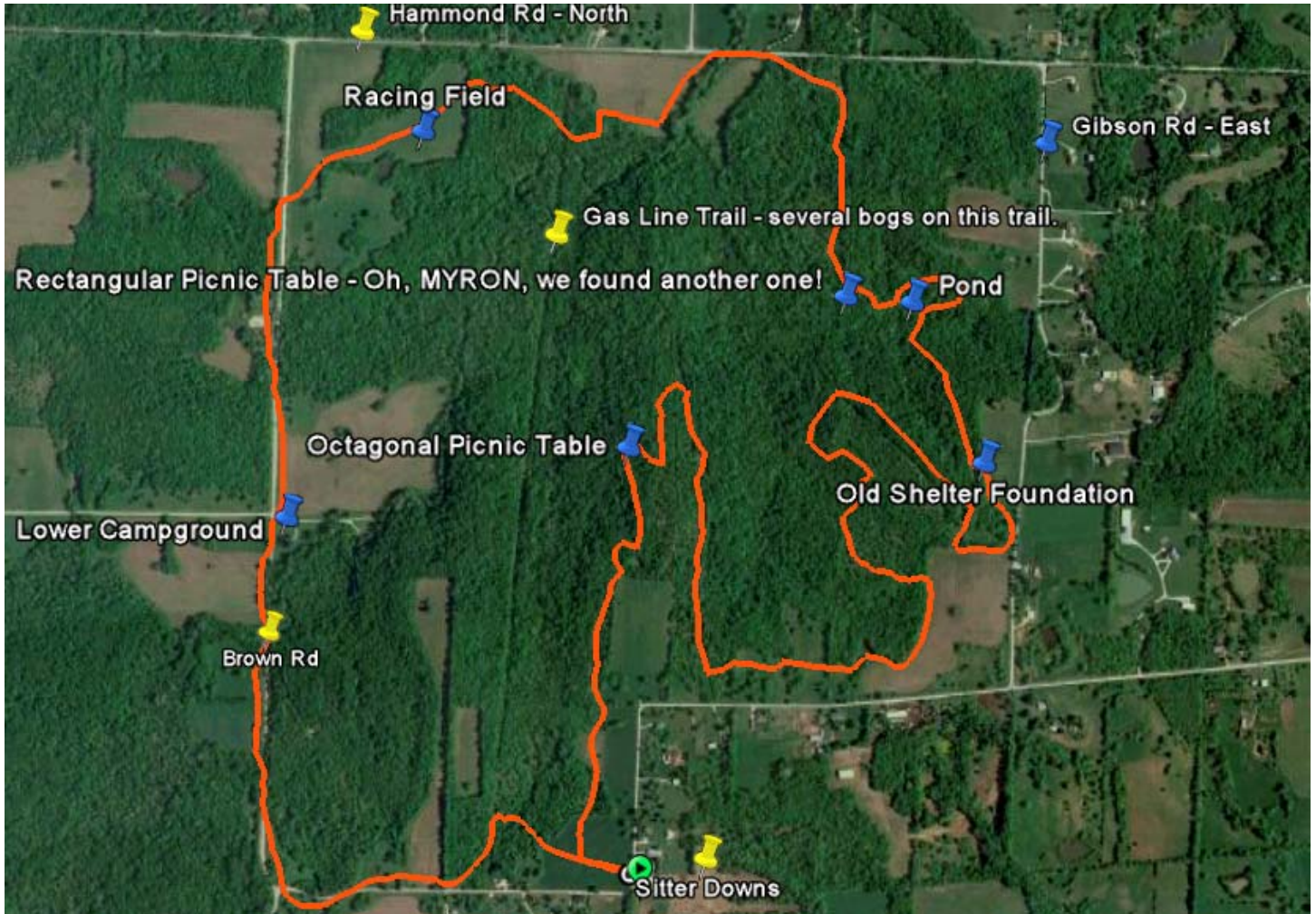
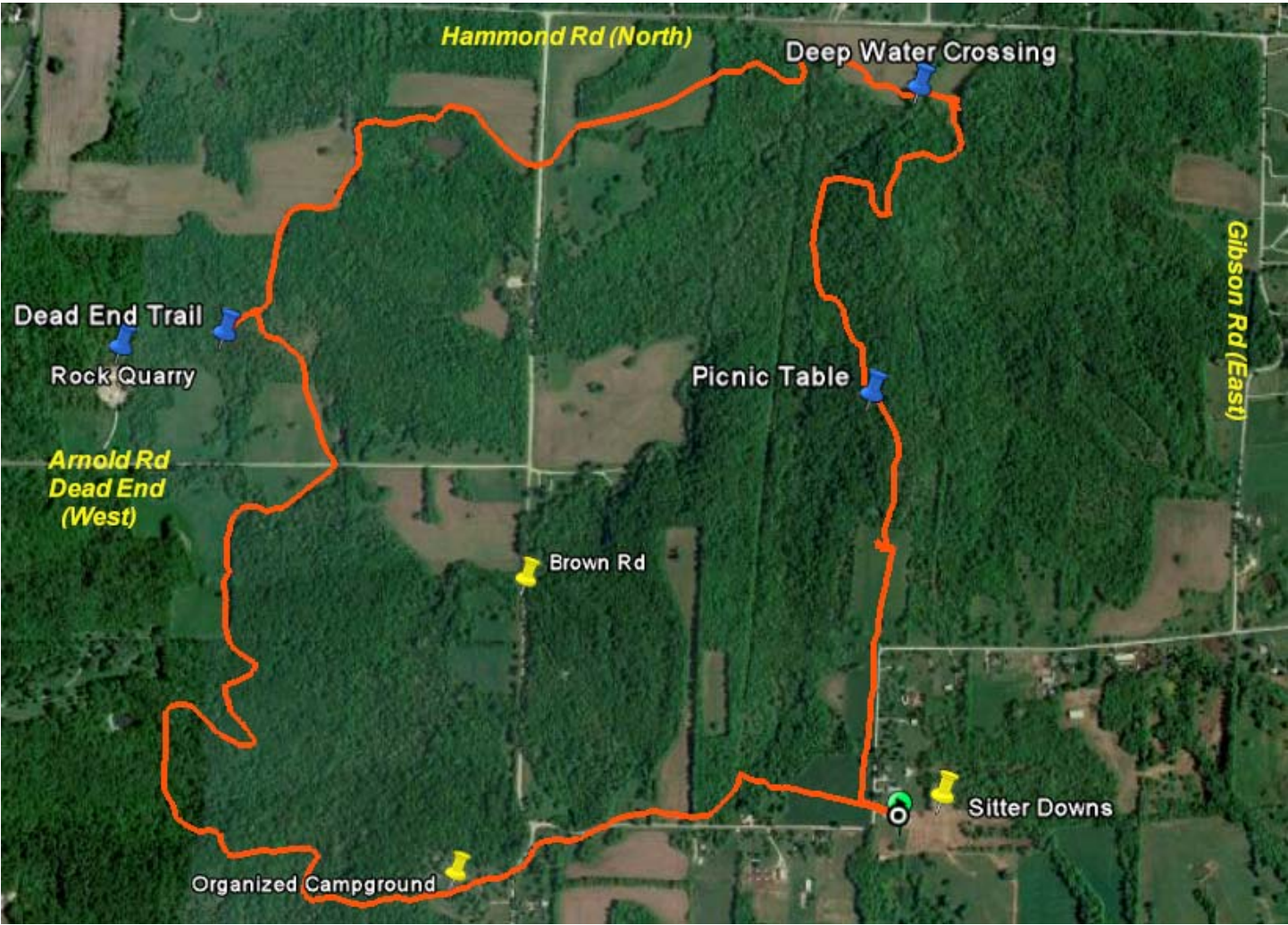


November 27, 2010 - northeast corner of Blue & Gray Park.

MYRON, one more picnic table found. Thanks for setting them out. We APPRECIATE it.



# November 20, 2010 Ride (North from Sitter Downs)

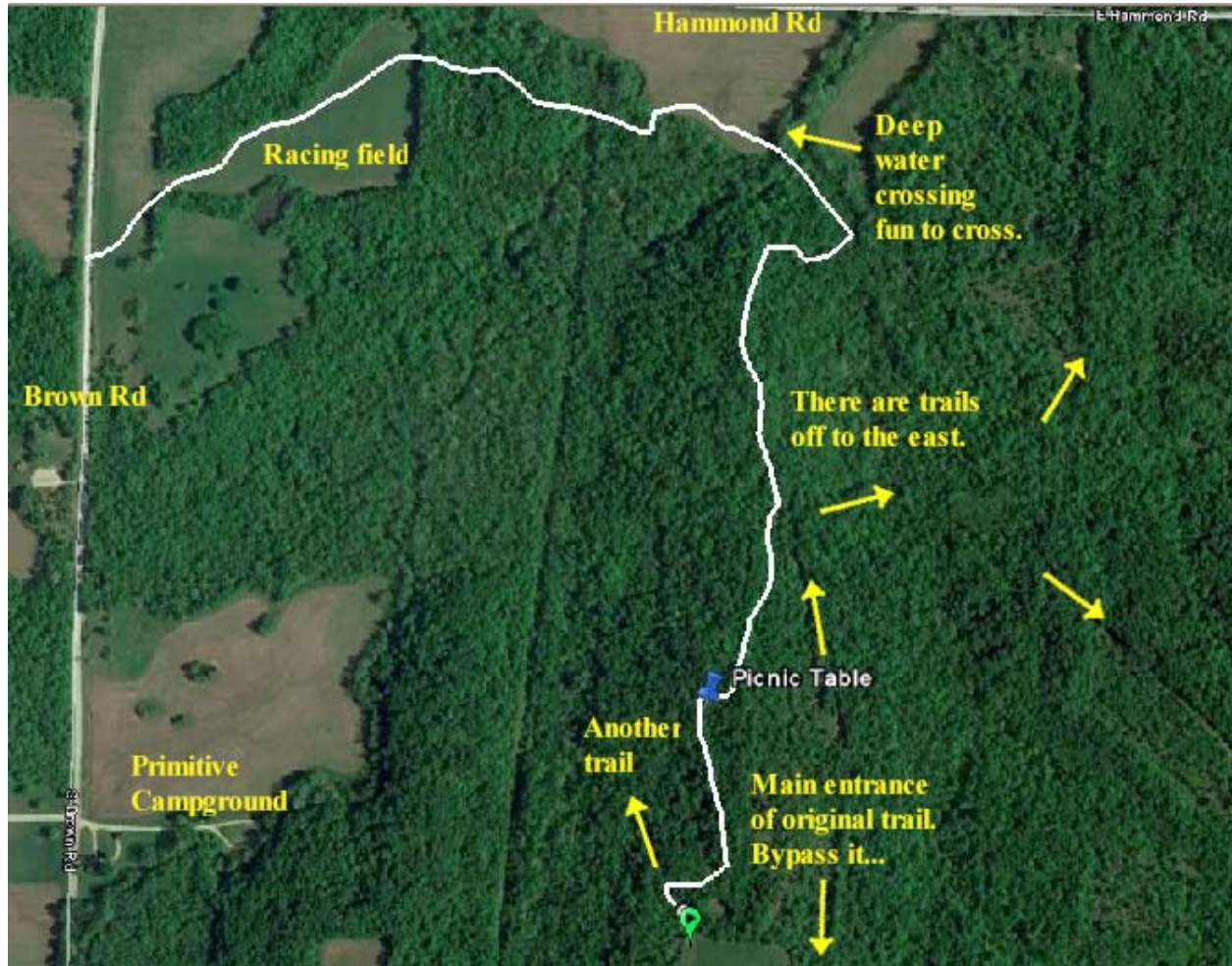


**Fall, November 2010 Riding  
Deep Water Crossing  
Karen & Boone having a good time.**

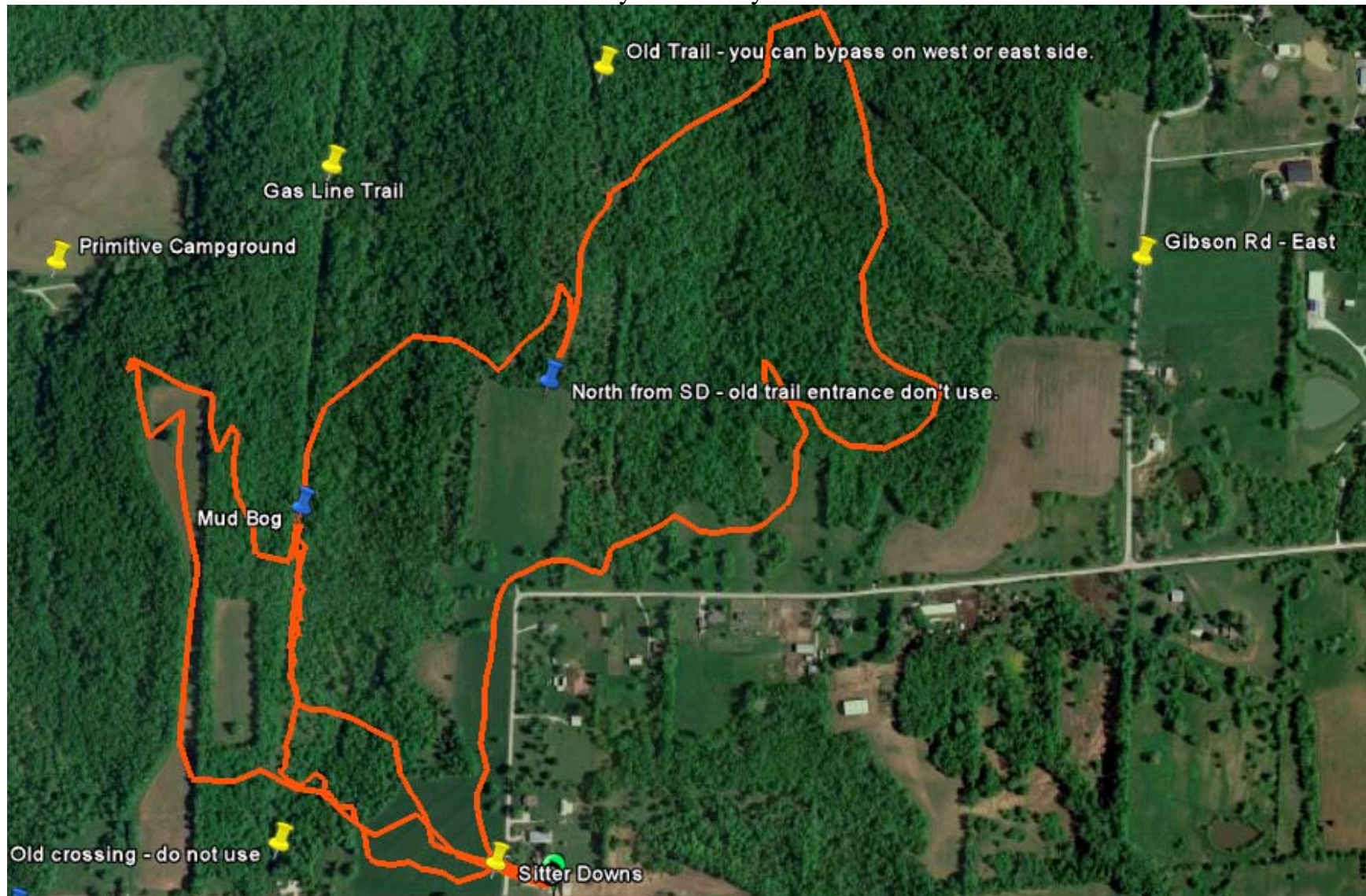


This trail is north of Sitter Downs. There are several trails west and east off of the "Main entrance".

The deep water crossing is fun to cross - the creek has a solid bottom to it.



The old trail is an original trail that has gotten rather deep in SOME places; however, there are several trails that are on the west or east side of that trail that connect you to many trails.



The trail that comes off of Gibson Rd that cuts to Hammond Rd is what we call our moonlight trail. This trail has several trails that are back west to the deep water crossing which keeps you off of Hammond Rd.

