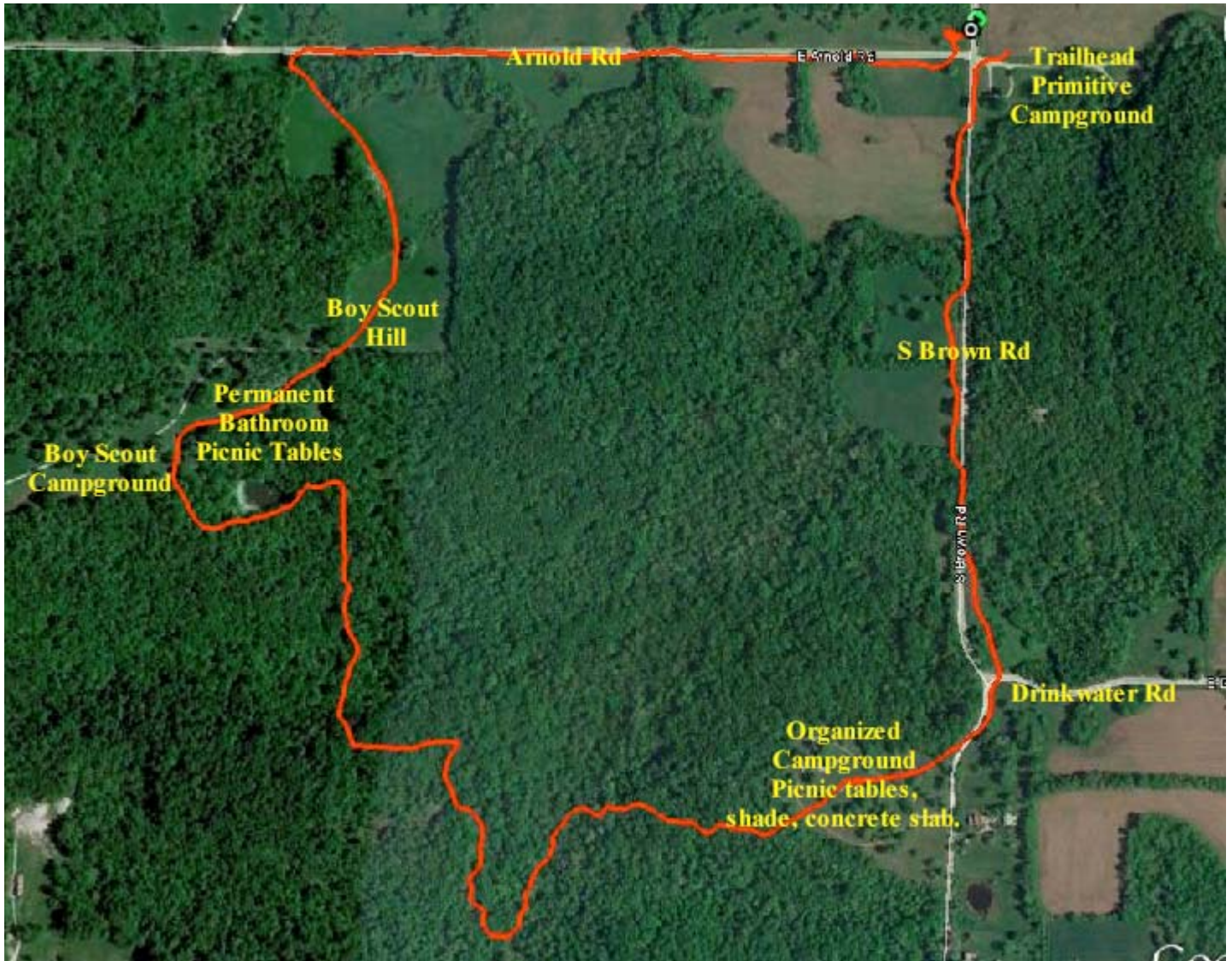


Sugar Creek Equinapy Ride, March 13th.

The ride was held at Blue & Gray Park on March 13th. It was a cold blustery day, but 64 riders did venture out.

This is our first loop. We headed back to the “Trailhead Primitive Campground”, as there were TV stations waiting to film us and some folks were getting cold.



We did venture out again to the north and back east, however, our boarder who had the GPS decided to head back to the barn. Personally, I think the 2nd ride was more fun. Kelly took us on some good trails (tad bit muddy, but that’s how it goes this time of the year).